



**Gewässer
Umwelt
Schutz**
GmbH



SAW collection basins

- Product brochure with assembly instructions

Wasser - unser wichtigstes Lebensmittel

Since 2005, GUS Gewässer-Umwelt-Schutz GmbH has been highly regarded as an experienced partner when it comes to catchment systems for securing escaping water-polluting substances so that they can be properly and safely recycled or disposed of. Customers across Germany put their trust in GUS expertise.

These assembly instructions must be read carefully before commissioning and using the SAW! These assembly instructions are considered part of the SAW and must always be kept in the immediate vicinity of the installation site.

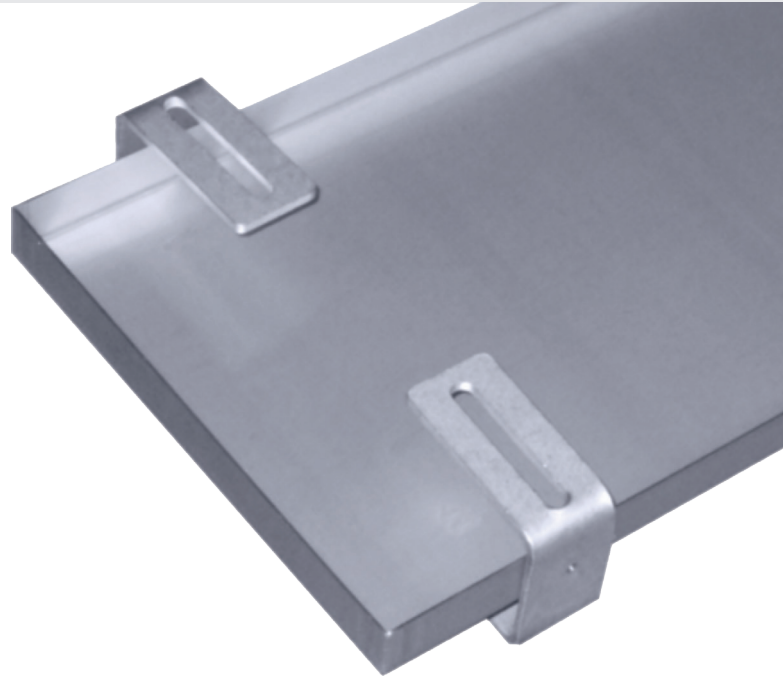


Subject to alterations. We assume no liability for errors and misprints.

Version: April 2020

Contents

- 3 Product Overview
- 4 Safety Information
- 5 Scope of Delivery
- 6 Description
- 7 Assembly Instructions
- 10 Maintenance, Warning and Leakage



SAW collection basins

Product Overview

SAW collection basin, depending on requirements

Optional accessories:

- Ball valve
- Pedestals for placing machine above
- possible liquid line and backsplash

Material: Stainless steel 1.4301 in 1,5 mm or aluminium AlMg3

Process: Welding according to DIN EN ISO 9606-1

This solution is used for units with water-polluting substances that are installed indoors.

Refrigeration machines are often housed in technical rooms. These often have a floor drain or are not sealed.

This collection basin is placed under the refrigerating machine to prevent water-polluting substances from flowing into the sewage system or into adjacent rooms in the event of unit leaks.

The collection basin meets the requirements of Section 62 of the German Water Resources Act.

Each collection basin is individually adapted to the requirements of the project.

Production is adapted to individual technical requirements.

Note:

- Keep these instructions near the SAW collection basins
- The installation and assembly of the SAW and its components may only be carried out by qualified personnel.
- Installation, connection and operation of the SAW and its components must be carried out in accordance with operating conditions as described in the instructions, and in compliance with applicable regional regulations.
- The condensate drip tray must be earthed.
- Modifications to the SAW or its components supplied by GUS may cause malfunctions and are not permitted.
- The SAW and its components must not be operated in areas where there is an increased risk of damage. Minimum clearances must be observed.
- The operational safety of the SAW and its components can only be guaranteed if they are used as intended and if they are fully assembled. Safety devices must not be changed or bypassed.
- Do not operate the SAW or its components if there are visible defects, or if it appears to be damaged.
- The SAW and its components must be kept at a safe distance from flammable, explosive, combustible, aggressive and polluted areas or environments.
- Assembly, repairs and maintenance must only be carried out by authorized specialist personnel. Visual inspections and cleaning can be carried out by the operator.
- When assembling, repairing, maintaining or cleaning the SAW, appropriate measures must be taken to prevent risks to people caused by the protector.

Safety Information

Read the operating instructions carefully before using the SAW collection basin for the first time. It contains useful tips, information and warnings to avoid hazards to persons and property. Failure to comply with the instructions can lead to danger to persons, the environment and the installation, and thus the loss of possible claims.

Recycling and Disposal of Packaging

All products are carefully packed for transport. Make a valuable contribution to waste prevention and conservation of raw materials and dispose of packaging materials only at designated collection points.

Warranty

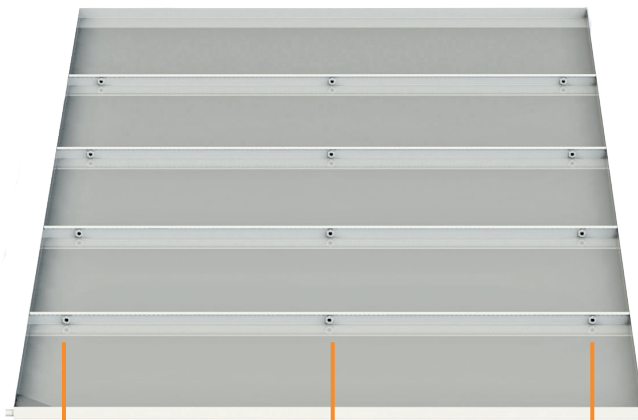
Warranty conditions are listed in "General Terms and Conditions". Please contact your dealer first.



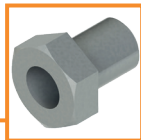
SAW collection basin scope of delivery

Note:

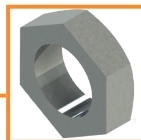
Check if your delivery is complete.



SAW collection basin
as depicted



Connecting screws 1/2"
3 pieces per connection level



Nut 1/2"
3 pieces per connection level

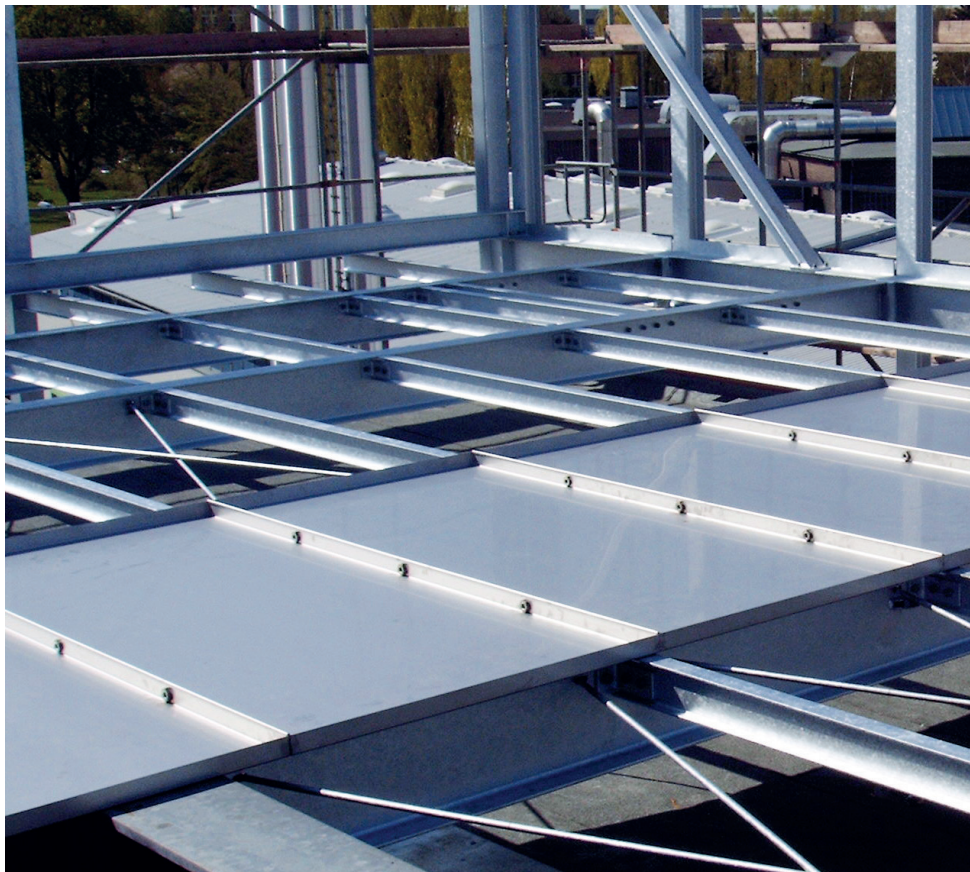


Sealing rings
6 pieces per connection level

Description

The German Water Resources Act (WHG) and the German Installations Ordinance (AwSV) regulate the handling of water-polluting substances. The stainless steel, 1.4301 in 1.5 mm-thick (or aluminium AlMg3) safety catchment trays help meet these legal requirements.

In the event of leaks, it prevents water-pollutant substances from class one to three from contaminating the environment, as per legal requirements.



SAW collection basin assembly instructions

When selecting the SAW collection basin, ensure that it is large enough so that all parts carrying water-polluting substances are located above the tray itself.

Alignment

For correct operation of the SAW collection basin, it is extremely important that the substructure is aligned.

Use a bubble level to ensure this. The surface of the substructure should be cleaned beforehand.

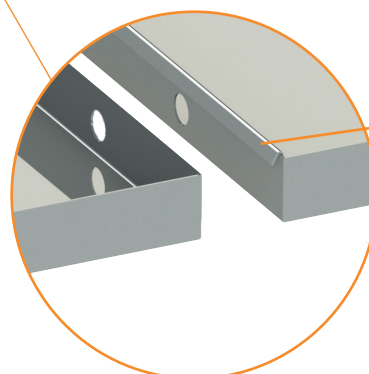
Place the first tray component of the SAW collection basin flush with the outer edge of the substructure. The composition of the individual trays is shown in the enclosed technical sketch.

Note:

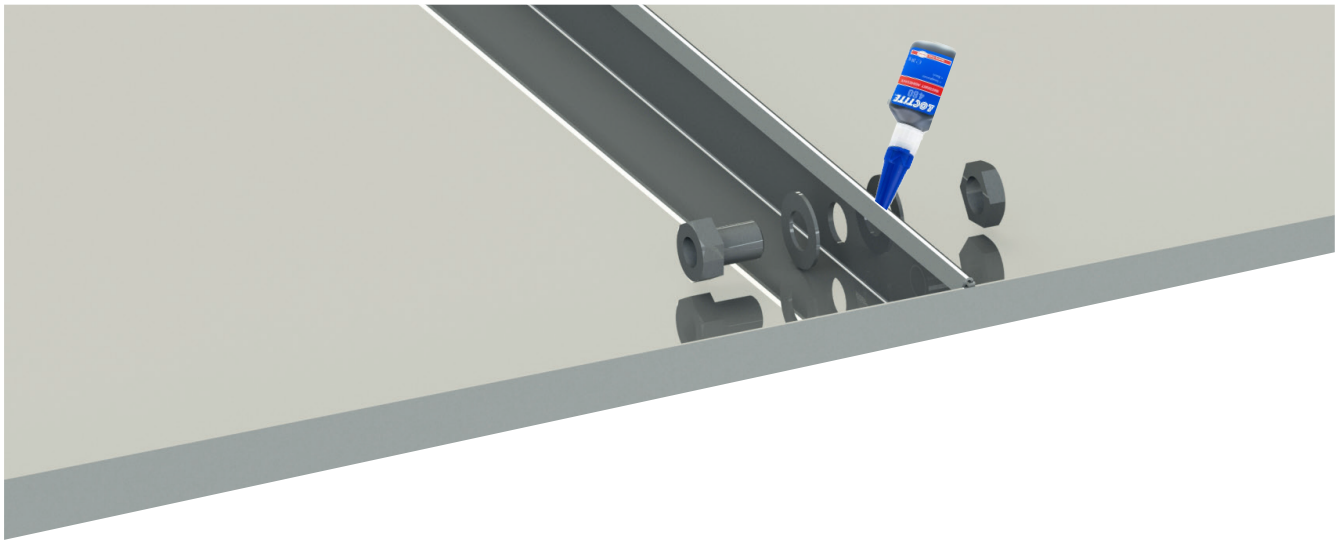
If possible, assembly should be carried out by at least two persons. For complicated installations, a technical sketch will be included with your delivery. Make sure that the trays rest completely on the substructure during assembly.

Insertion

Insert the long side and backslash side of the second tray component in the long side of the first tray component, so that the backslash side is turned over the straight side of the first tray component. Make sure that the sides are not bent. Depending on the type, proceed in the same way with the other parts of the tray.



Backslash side



Connection

Connect the individual tray components with the included connecting screws. Coat the threaded surface with the included screw-locking agent. Slide a sealing ring over the thread up to the hexagonal flange, and insert the bolt connection through the connecting hole as shown.

Then slide the second sealing ring over the protruding thread until it reaches the stainless-steel sheet. Apply the screw-locking agent to the thread again, and then screw the included nut onto the thread until it is tight.

Proceed in the same way with the remaining connecting holes.

After you have mounted all connecting screws with a backsplash as outlined above, they must be tightened with the appropriate tools so that the connections become watertight.

Ensure that the required drying time for the screw-locking agent is maintained.

Note:

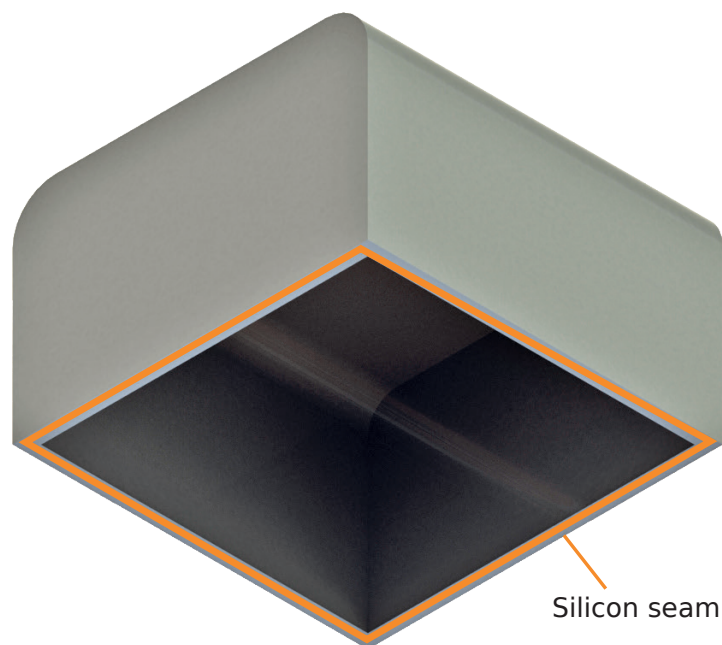
Ensure that the tray components rest completely on the substructure, and that you allow the screw-locking agent to dry.

Pedestals

Apply a generous amount of water- and oil-resistant sealing compound (e.g. silicone) to the undersides of the base pedestals. Position the pedestals inside the protector at the desired points. Pay attention to the included technical sketch. Now, seal the outside of the pedestals with a water- and oil-resistant sealing compound (e.g. silicone).

Note:

If you drill through the tray, a 24-hour pressure test must be carried out to ensure tightness.



Fixing

The installation can now be fixed with the base platforms. Note that the installation should be connected to the base pedestals and the protector on the substructure. Drilling through the tray may cause leaks during acceptance. We recommend an installation that extends around the tray..

If holes cannot be avoided then they should be sealed. We are happy to provide you with information regarding fixing.

Maintenance, Warning and Leakage

Maintenance

The SAW collection basin should be inspected regularly.

If there are traces of water-polluting substances in the catchment tray, shut down the installation immediately and inform your refrigeration and air-conditioning specialist.

Traces of water-polluting substances must be disposed of properly.

Warning

To prevent bimetallic corrosion, metal particles should not enter the collection basin.

Leakage

The SAW Collection Basin must be checked in case of leaks. Water-polluting substances collected in the collection basin must be disposed of properly.

Note:

If you have any questions regarding assembly, installation, maintenance etc., please do not hesitate to contact us at:

Service number: +49 (0) 5921 71347 - 0.

**Gewässer
Umwelt
Schutz**
GmbH



Bentheimer Str. 300
D-48531 Nordhorn
T: 49 (0) 5921 71347-0
info@oelprotektor.de

Ölprotektor.de

